

The logo for IGNITE, featuring the word "IGNITE" in a bold, black, sans-serif font. A thin blue line forms a partial circle around the letter "I".

IGNITE



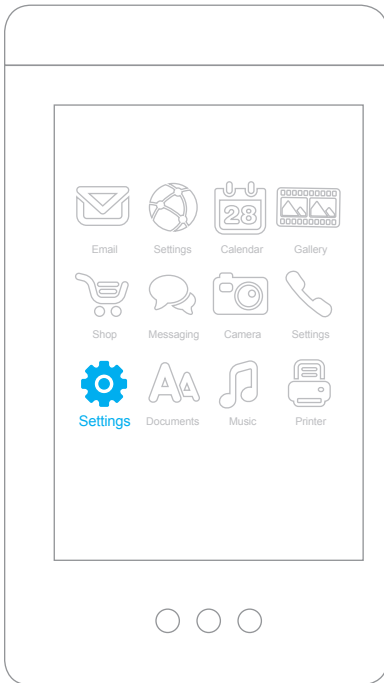
# Android Setup

Installation and Setup

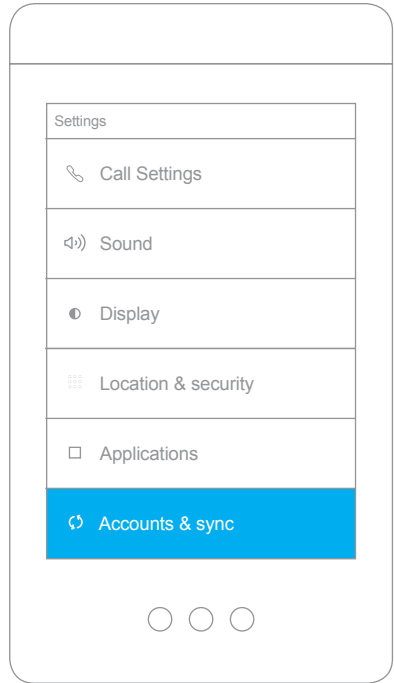
# Android Setup

## Installation and Setup

1. On your Android Home screen, tap the **Settings** icon.

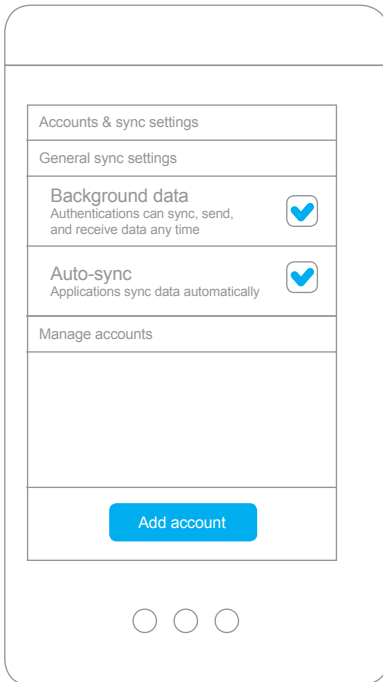


2. Select **Accounts & sync**.



3. Tap **Add account**.

**Note:** After you have performed the installation process and your Zimbra account is installed, it will display on this screen and you can edit the account from here.

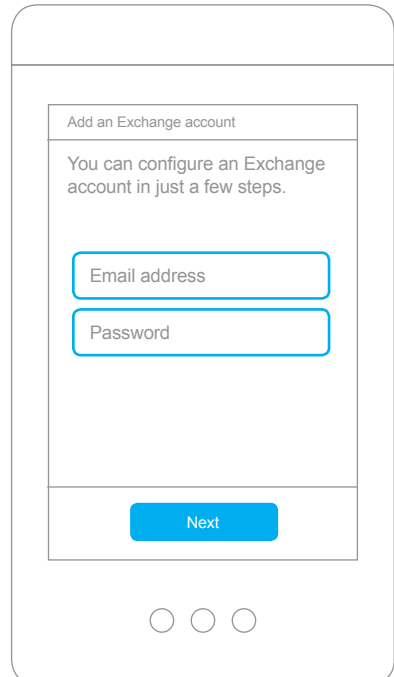


4. Enter your **Email address** and **Password** to add an account:

- **Email address:** This is your company email address, for example **user@company.net**.
- **Password:** This is your Zimbra password, which is the same one used for the Zimbra Web Client.

Click **Next**.

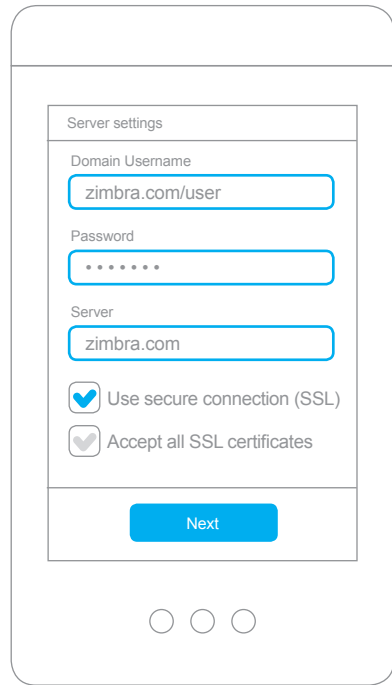
**Note:** ZCS 7.x does not support auto-discovery. If you want to perform auto-discovery, you need to enter the server name on the Server Settings screen.



5. Enter server settings.

- **Domain\Username:** This is your company's email server domain. For example, mail.company.net... the same base URL you type in the browser for the Zimbra Web Client. (For a simple explanation of a domain, see <http://computer.howstuffworks.com/dns2.htm>).
- **Username:** This is the Zimbra username of your account, the same one you use to log in to the Zimbra Web Client. For example, [user@company.net](mailto:user@company.net).
- **Server:** This is your Zimbra server. (This is either your mailbox server or proxy server. Ask your administrator for this information).
- **Use SSL:** Your administrator can tell you more about SSL and if you need to use a secure connection. Typically if you access your Zimbra Web Client using a URL beginning with https:// then you want to check SSL. (For a simple explanation of SSL, see <http://computer.howstuffworks.com/encryption4.htm>).

Click **Next**.



The screenshot shows a mobile device screen with a 'Server settings' form. The form contains the following fields and options:

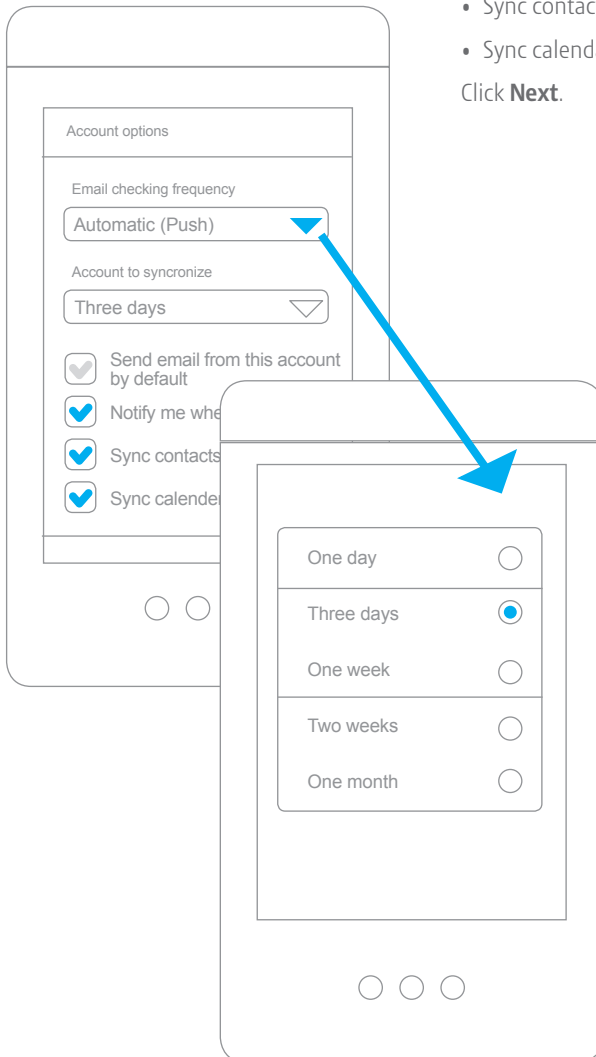
- Domain Username:** A text input field containing 'zimbra.com/user'.
- Password:** A password input field with six dots representing masked characters.
- Server:** A text input field containing 'zimbra.com'.
- Use secure connection (SSL)
- Accept all SSL certificates

At the bottom of the form is a blue 'Next' button. Below the form are three small white circles, with the first one filled, indicating the current step in a sequence.

6. Configure your email account options.

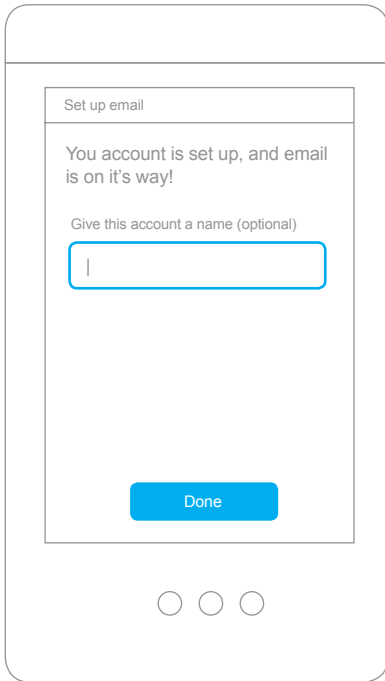
- Email checking frequency
- Amount of synchronize
- Send email from this account by default
- Notify me when email arrives
- Sync contacts from this account
- Sync calendar from this account

Click **Next**.



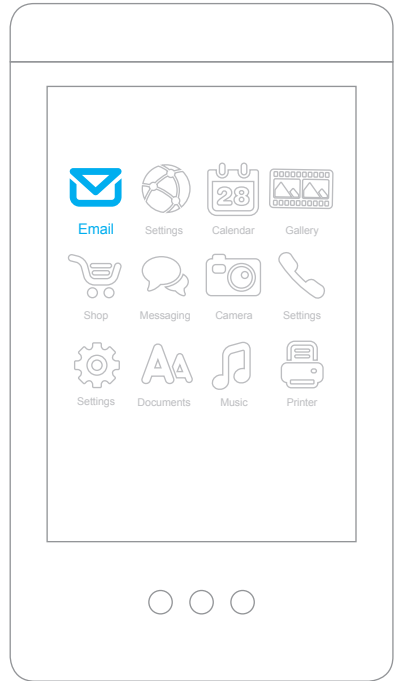
7. Your account set up is complete. You can optionally give this account a name.

Click **Done**.



8. After your account is completely set up, you can access your mail on the Android Home screen using the **Email** icon.

**Note:** This is the default mail icon.

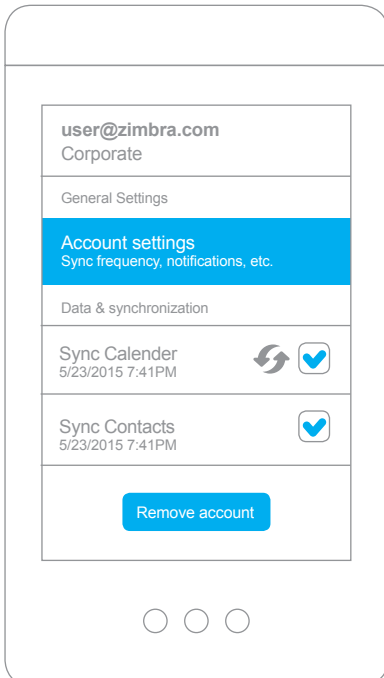


## Configuration Options

Once you have successfully set up your account, your mail folders, contacts and calendar(s) appear on your device. You can choose to edit either global or account-specific settings.

### Edit Global Settings

Select **General Settings**. From this screen you can edit your **Account Settings**, enable **Sync Calendar**, and enable **Sync Contacts**. You can also remove your account from this screen. To navigate to this screen, select **Settings>Accounts** or tap on your **Zimbra account**.



### Edit Account Settings

If you want to edit your account settings, from the **General Settings** screen tap **Account Settings** and you can edit settings such as your name or signature.

